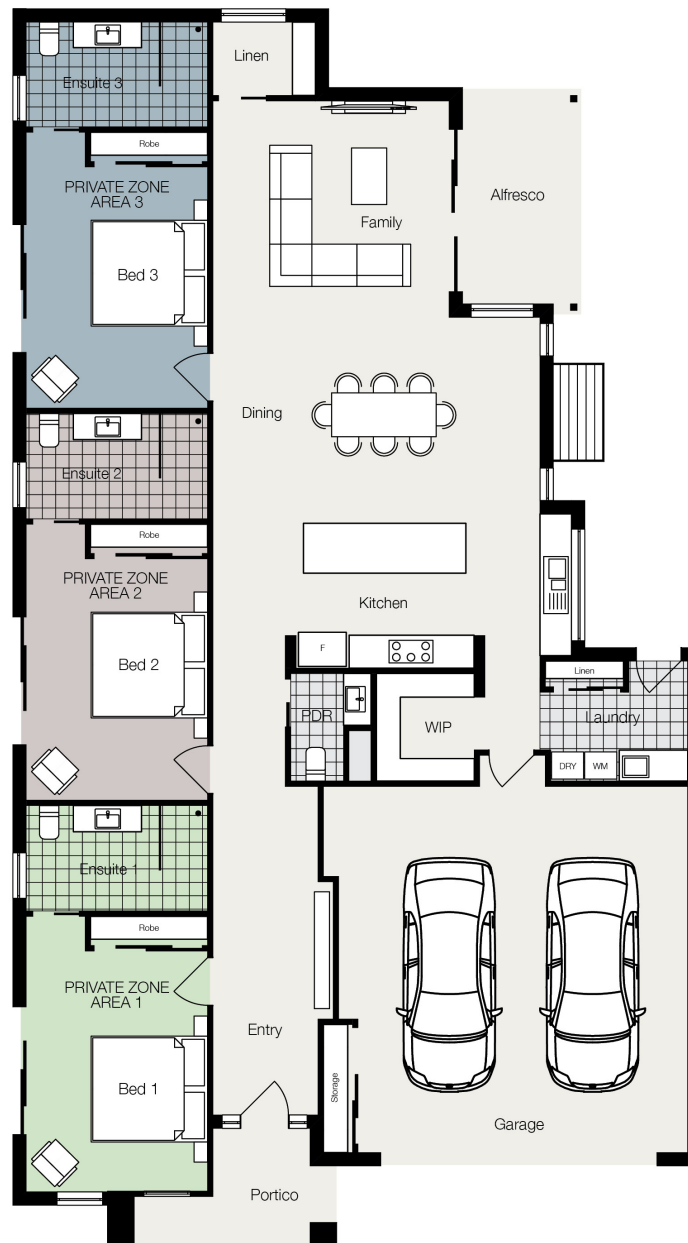


CO LIVING 27

- ✓ Step free entry from the street
- ✓ Wider doorways & passageways
- ✓ Fully tiled showers

House Width 12.880m
House Length 22.350m

Min. Block Width 14.08m
Min. Block Length 30.35m



**Co Living
Australia**

🛏 3 🍽 3 🚗 2 🚽 4

Private Zone 1	27.2sqm	
Private Zone 2	27.2sqm	
Private Zone 3	27.2sqm	
Shared Area	171.9sqm	

Total Area 253.50sqm 27.28sq

DESIGNER HOMES BUILT FOR SHARING

Visit us at colivingaus.com.au