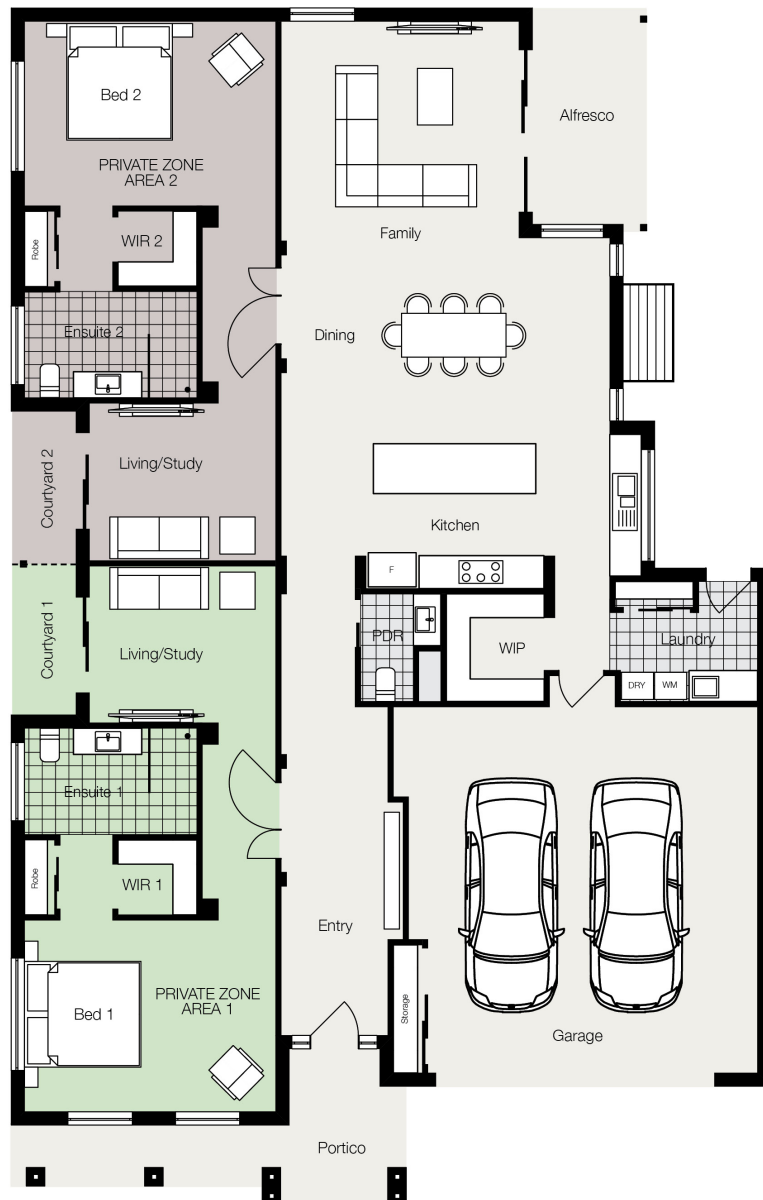


CO LIVING 30

House Width 14.170m
House Length 22.360m

- ✓ Step free entry from the street
- ✓ Wider doorways & passageways
- ✓ Fully tiled showers

Min. Block Width 15.6m
Min. Block Length 30m



**Co Living
Australia**

🛏️ 2 🍽️ 2 🚗 2 🚽 3

Private Zone 1	52.4sqm	
Private Zone 2	52.4sqm	
Shared Area	171.5sqm	

Total Area 277.14sqm 29.83sq

DESIGNER HOMES BUILT FOR SHARING

Visit us at colivingaus.com.au